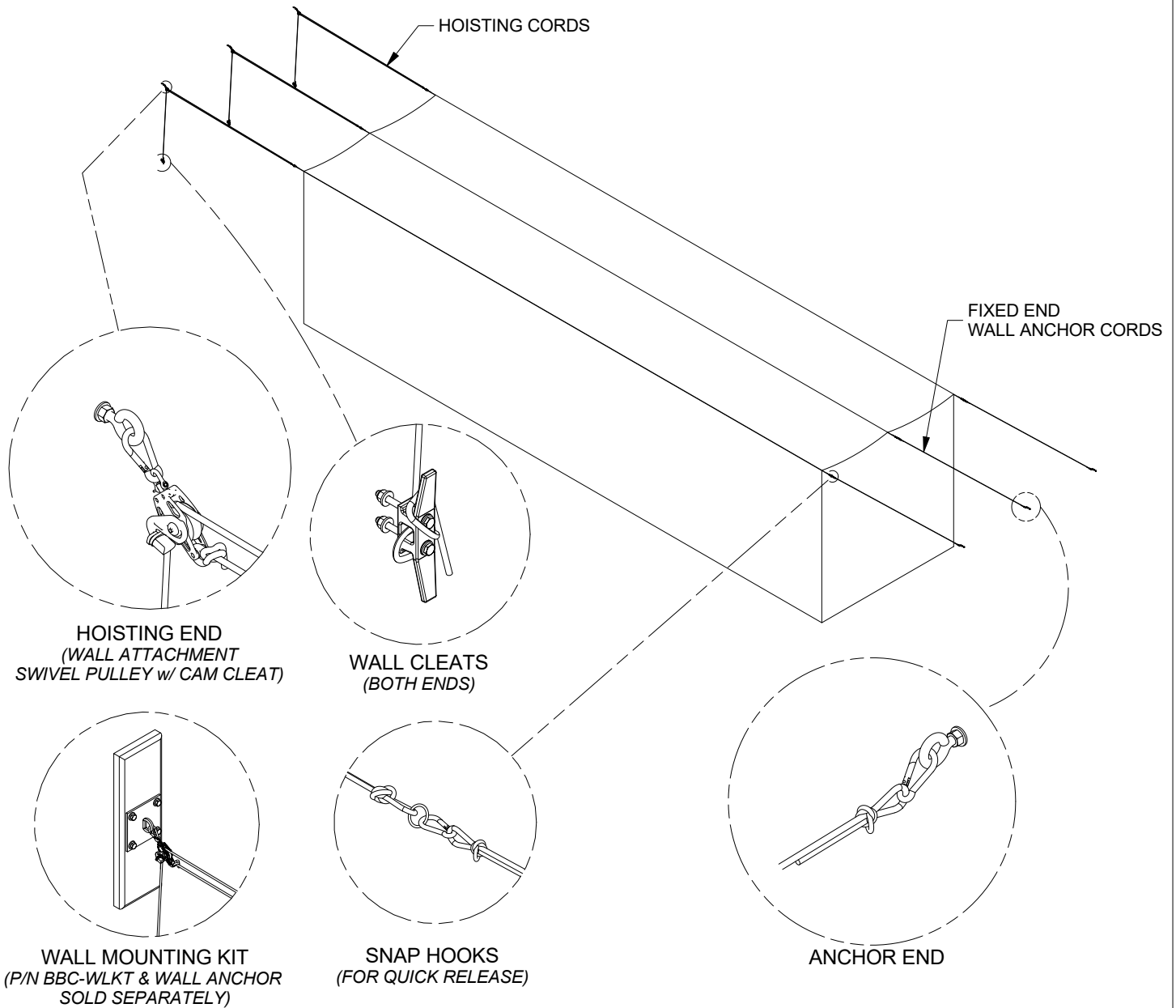




# BBC-QS55 QUICK SET-UP BATTING TUNNEL

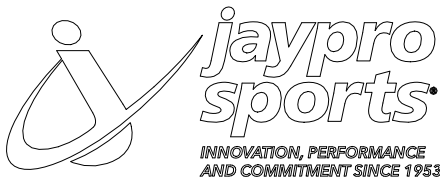


### FEATURES:

- > FULL SIZE BATTING CAGE THAT SETS-UP AND TEARS-DOWN IN MINUTES, WITHOUT THE NEED FOR A LADDER.
- > DESIGNED TO ATTACH TO OPPOSING WALLS, UP TO 120 FT APART.
- > NET MEASURES 14' H X 14' W X 55' L
- > NET IS BLACK, HIGH-TENACITY POLYPROPYLENE (HTPP), 1-3/4" MESH, 2.5 MM TWINE, KNOTLESS.
- > USES THREE (3) MARINE GRADE RIGGING BLOCKS, WITH LOCKING CAMS TO HELP TENSION AND LOCK THE NET INTO POSITION.
- > COMES WITH SIX (6) WALL CLEATS, TO ANCHOR AND STORE HOISTING CORDS TO THE WALL.
- > NET ATTACHES TO HOISTING CORDS USING SNAP HOOKS FOR QUICK RELEASE.

### OPTIONS:

- > WALL MOUNTING KIT: (PN: BBC-WLKT)
- > NET STORAGE CART WITH LINER AND COVER (PN: TE-2)



## BBC-QS55

55FT - QUICK SET-UP BATTING TUNNEL

© COPYRIGHT 2015 JAYPRO SPORTS, LLC. ALL RIGHTS RESERVED  
THIS PRINT IS THE PROPERTY OF JAYPRO SPORTS, LLC. AND MAY NOT BE REPRODUCED WITHOUT WRITTEN PERMISSION

www.jaypro.com  
(800) 243-0533  
976 Hartford Turnpike  
Waterford, CT 06385 USA